

FLOODED LEAD-ACID BATTERY - TROUBLESHOOTING

1. General

- A. A troubleshooting chart is included to aid the maintenance technician in system understanding. Refer to Figure 101.

Figure 101 : Sheet 1 : Flooded Lead-Acid Battery Troubleshooting Chart

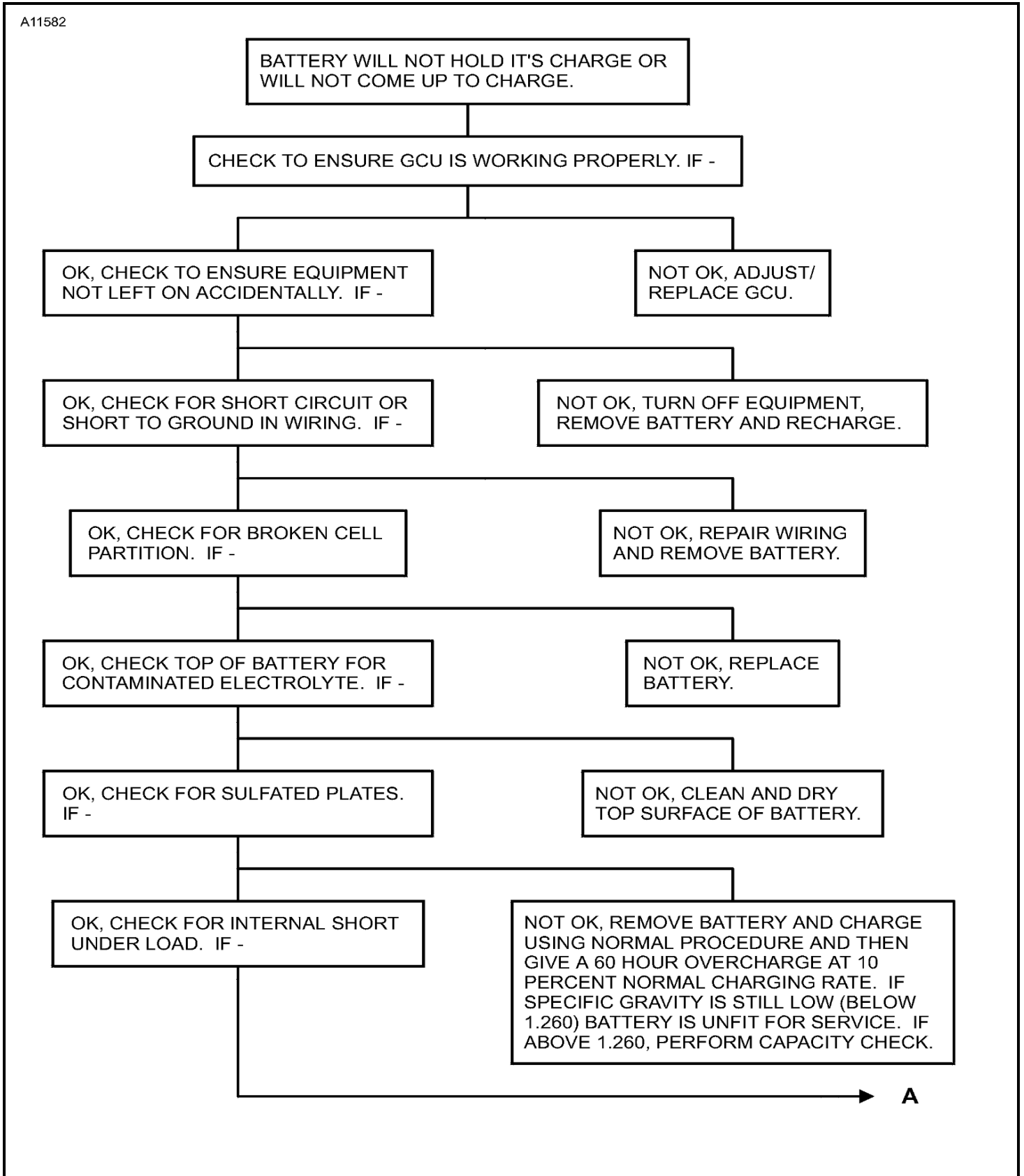


Figure 101 : Sheet 2 : Flooded Lead-Acid Battery Troubleshooting Chart

A11583

OK, CHECK FOR BATTERY DISCHARGING DUE TO SULFATION TRACE BUILDUP. REMOVE BATTERY, FULLY CHARGE, AND CLEAN AND NEUTRALIZE OUTSIDE OF BATTERY. STORE IN DRY COOL AREA FOR 10 DAYS. IF SPECIFIC GRAVITY DROPS MORE THAN 15 POINTS, REPLACE BATTERY.

NOT OK, REMOVE BATTERY. AFTER A FULL CHARGE, APPLY 30 AMP LOAD FOR 10 MINUTES. REPLACE BATTERY IF SPECIFIC GRAVITY DROPS 80 OR MORE POINTS BELOW AVERAGE.

A →

Figure 101 : Sheet 3 : Flooded Lead-Acid Battery Troubleshooting Chart

A11584

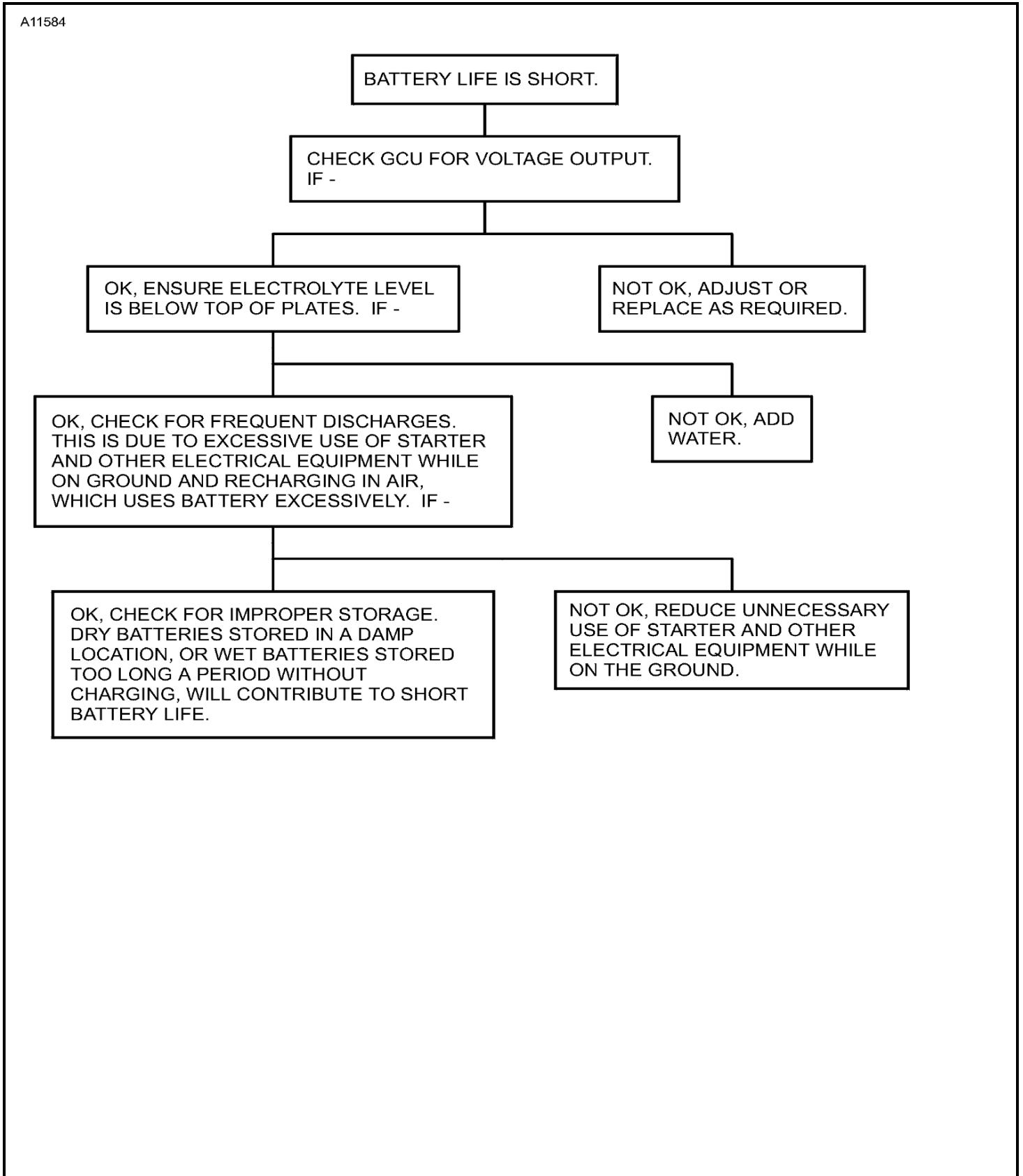


Figure 101 : Sheet 4 : Flooded Lead-Acid Battery Troubleshooting Chart

A11585

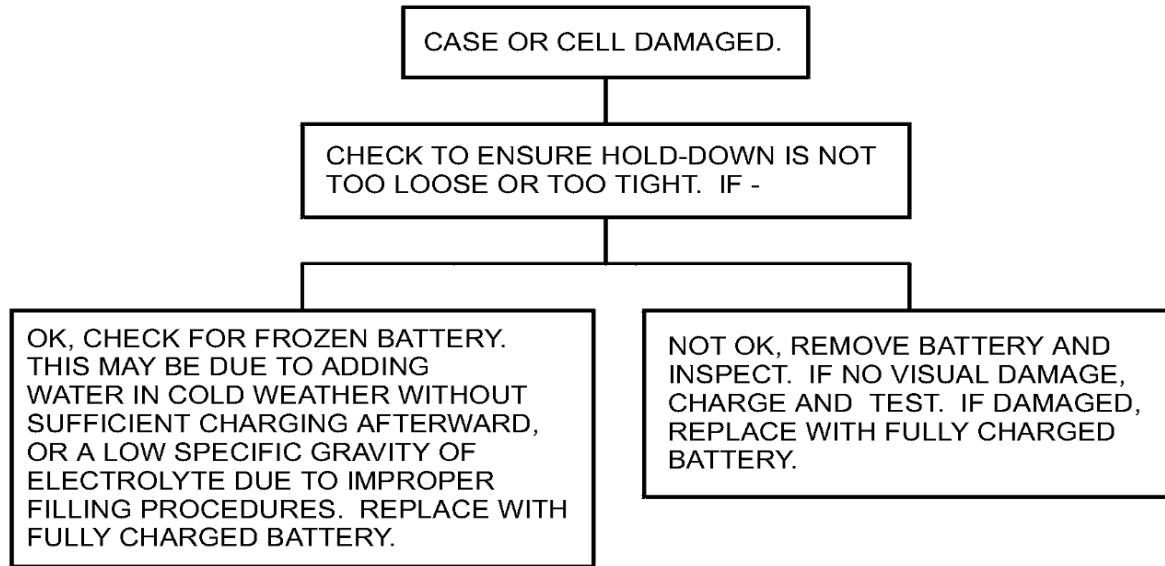


Figure 101 : Sheet 5 : Flooded Lead-Acid Battery Troubleshooting Chart

A11586

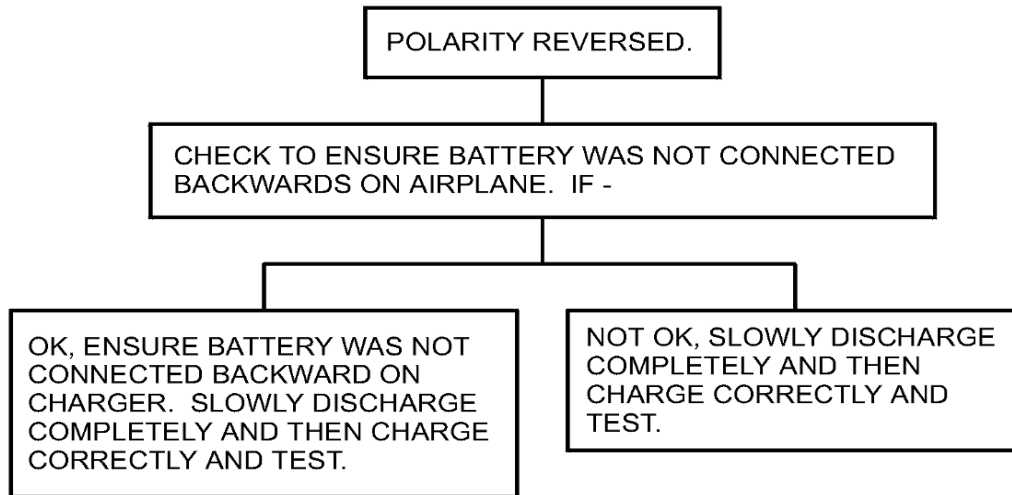


Figure 101 : Sheet 6 : Flooded Lead-Acid Battery Troubleshooting Chart

A11587

